



**Dreyer Risk Solutions**



## *Our Mission*

“To be an Agile Electrical Construction company that our clients rely on to provide solutions.”



## *Our Service Offering*

We are a company that focuses on:

- Design assistance
- Procurement, expediting and logistics
- Project management
- Contracts management
- Planning and scheduling
- Complete Site installation
- After sales service and support



# *Our Product Offering*

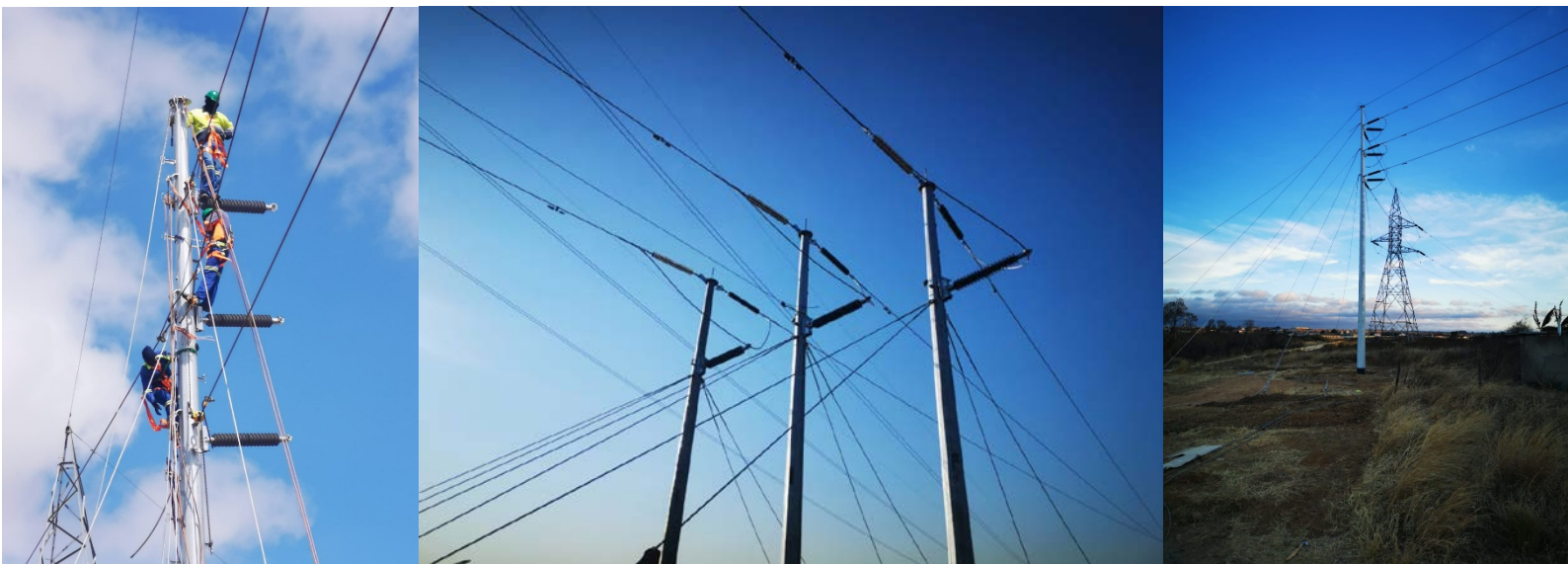
## **Overhead Lines**

- 11kV – 275kV
- Wood, steel and concrete poles
- Lattice Structures
- Survey and profiling
- Foundation designs
- Tension Stringing
- Complete installation
- Emergency Maintenance works



## **ISO Implementation**

- We work within the guidelines of ISO 9001, 14001 and 45001 requirement



# Key Staff

## Calvin Fisher

Calvin has worked extensively within the Overhead Line construction sector since 2008 and has completed numerous projects. Before establishing LM Power (Pty) Ltd, Calvin worked as a Senior project Engineer and later as a divisional manager for OHLs.

Projects Calvin has completed:

- |   |                |
|---|----------------|
| 1. Amandelbult 62 East Vent Shaft line              | - 33kV - 1km   |
| 2. Ekhuruleni 44kV Line deviation                   | - 44kV - 1km   |
| 3. Klipfontein Colliery 33kV OHL                    | - 33kV - 5km   |
| 4. Exxaro Belfast 22kV OHL                          | - 22kV – 10km  |
| 5. Anglo Witbank Coal Mine 33kV OHL                 | - 33kV – 16km  |
| 6. Esther Park 66kV OHL Upgrade                     | - 66kV - 3km   |
| 7. Polokwane 66kV Double Circuit ACSR Goat Line     | - 66kV - 9km   |
| 8. Bokpoort 132kV OHL                               | - 132kV - 1km  |
| 9. ZETDC – Hanock Ranching Double Circuit OHL       | - 132kV – 4km  |
| 10. Mamelodi 132kV Double Circuit Lattice OHL       | - 132kV - 4km  |
| 11. Polokwane Munic E/Wire repairs on 132kV network | - 132kV - 3km  |
| 12. Hopeville Line Deviation – Double circuit OHL   | - 132kV - 8km  |
| 13. Connection to Dediza - Double Circuit Twin UPAS | - 132kV - 5km  |
| 14. Nelspruit 132kV OHL to World Cup Stadium OHL    | - 132kV - 6km  |
| 15. Coega 132kV Line Extension                      | - 132kV - 6km  |
| 16. Touwsrivier 132kV OHL for Solar Plant IPP       | - 132kV - 12km |
| 17. Coega Zone 5 - Double Circuit Twin UPAS Line    | - 132kV - 13km |
| 18. Kenterton - Umzali OHL (Single ACSR Kingbird)   | - 132kV - 42km |
| 19. Corinth - Umzali OHL (Single ACSR Kingbird)     | - 132kV - 43km |
| 20. Noupoot Wind Farm Lines & Underground Cables    | - 132kV - 59km |
| 21. Ghana - Collector 161kV OHLs                    | - 161kV - 5km  |
| 22. Ghana Smelter II 161kV OHL                      | - 161kV - 11km |
| 23. Sebenza 275kV OHL deviations                    | - 275kV – 7km  |
| 43. Ester Park Overhead Line                        | -66kV – 2km    |
| 44. Hopeville Overhead Line (Zimbabwe)              | -132kV – 5km   |
| 45. Klipfontein Mine Overhead line                  | -11kV – 8km    |
| 46. DRD Gold Overhead Lines                         | -22kV – 18km   |
| 47. TRP Mine Twin and Quad Overhead Lines           | -11kV – 8km    |

# Key Staff

## **Johan Mouton - Manager**

Johan has worked extensively within the Overhead Line construction sector since 2010 and has completed numerous projects. Johan started his OHL career as a SHEQ Specialist and later moved over to managing construction Sites and finally Operations manager.

Projects Johan has completed:

1. Eshowe Electrification – 1850 Connections - Eskom - LV - 1850 Houses
2. Mount Frere Electrification–2500 Connections-Eskom - LV - 2500 Houses
3. Nkandla Electrification – 1400 Connections - Eskom - LV - 1400 Houses
4. Flagstaff Electrification – 2500 Connections - Eskom - LV – 2500 Houses
5. Northam Plats 132kV OHL - 132kV - 11km
6. Dorper Windfarm 132kV Loop-in Loop-out - 132kV - 3km
7. Amakhala Wind Farm 132kV OHL - 132kV - 7km
8. Nojoli Wind Farm 132kV OHL - 132kV – 5km
9. Ekurhuleni 44kV Line deviation - 44kV - km
10. Klipfontein Colliery 33kV OHL - 33kV - 5km
11. Esther Park 66kV OHL Upgrade - 66kV - 3km
12. Mamelodi 132kV Double Circuit Lattice OHL - 132kV - 4km
13. Polokwane Munic E/Wire repairs on 132kV network - 132kV - 3km
14. Hopeville Line Deviation – Double circuit OHL - 132kV - 8km
15. Northam 132kV OHL - 132kV - 21km
16. Perdekraal Wind Farm
17. Koega Wind Farm
18. West Coast 1 Wind Farm
19. Oysterbay Wind Farm
20. Soetwater Wind Farm
21. Hydra Capella Substation
22. Ouga 1 and Ouga 2 Substations (Burkina Faso)
23. Area 25 Substation (Malawi)
24. City Centre Substation (Malawi)
25. Bwengu Substation (Malawi)
26. Kangoma Substation (Malawi)
27. Sonda Substation (Malawi)
28. Lilongwe Substation (Malawi)
29. Area 13 Substation (Malawi)
30. Nairobi Ring Substations and OHL (Kenya)

# Key Staff - Continued

31. Selenkei Wind Farm (Kenya)	
32. Gantsi OHL (Botswana)	-220kV – 210km
33. Mawana OHL (Botswana)	-220kV – 89km
34. Kolwezi Substation (Democratic Republic of Congo)	
35. Khoemacau Copper Mine (Botswana)	
36. Al Khadra Substation (Oman)	
37. South Mahe Electrical Upgrade (Seychelles)	
38. Rukarara Substation (Rwanda)	
39. Solitude PV Substation (Mauritius)	
40. Livingstone Substation (Zambia)	
41. Black Lion Substation (Ethiopia)	
42. Shegole Substation (Ethiopia)	
43. Ester Park Overhead Line	-66kV – 2km
44. Hopeville Overhead Line (Zimbabwe)	-132kV – 5km
45. Klipfontein Mine Overhead line	-11kV – 8km
46. DRD Gold Overhead Lines	-22kV – 18km
47. TRP Mine Twin and Quad Overhead Lines	-11kV – 8km
48. Umbila Emoyeni 1 Wind Farm Overhead Line	-33kV – 22km
49. Fleurhof Overhead Line	-88kV – 10km
50. M2 Conductor and Tower Removal	
51. Aquila MTS 400kV Bypass Overhead Line	-400kV – 250m



## Contact Details

Director – Johan Kriel

Cell: +27 72 178 5406

Email: [johan.kriel@drs-cd.com](mailto:johan.kriel@drs-cd.com)

Address:

Suite 302, Zambia National Building Society, President  
Avenue, Ndola, Zambia