



CONTENT



01 INTRODUCTION

Profiles
Enterprise Honors

02 APPLICATION

Rockbolt Series	Rebar Series
Coal mine support	Pavement and bridge deck paving
Tunnel support	Coastal engineering
Slope support	Rail traffic
Foundation support	Project case

03 PRODUCT

Rockbolt Series	Reinforcement series
FRP Solid Rockbolt	Glass fiber bar
FRP Hollow Rockbolt	Basalt reinforcement
FRP Form Tie	Carbon fiber reinforcement
FRP Mesh	Irregular reinforcement
FRP Cable Bolt	FRP mesh
	Second generation reinforcement

04 QUALITY

05 SERVICE



About Us

Afritech Composites is an exciting new sister company of Induction Heating Services (IHS), Johannesburg's trusted industry leader since 1985.

Born from decades of industrial innovation, Afritech is stepping into the market with a clear mission — to lead the transformation of Africa's construction and mining industries through advanced composite materials. Our cutting-edge solutions are designed for strength, sustainability, and performance, offering smarter alternatives to traditional materials.

Backed by IHS's proven expertise and driven by a new generation of innovation, Afritech Composites is coming strong — ready to redefine the future of composites across Africa.

➡ OUR VISION

To transform the global mining landscape by leading the shift towards high-performance composite solutions, delivering safer, lighter, and more efficient operations for the mines of the future.

➡ OUR MISSIONS

To deliver advanced composite products that outlast and outperform traditional materials, transforming mining operations through innovation. Our solutions reduce downtime, enhance safety, cut costs, and drive the industry toward a modern, sustainable future.

➡ OUR VALUES

We innovate with purpose, creating composite products that redefine mining. We deliver strength, reliability, and efficiency while keeping safety first. Committed to sustainability, we design lighter, energy-efficient solutions and build strong partnerships to drive change, always preparing for the future of mining.



Rockbolt Series

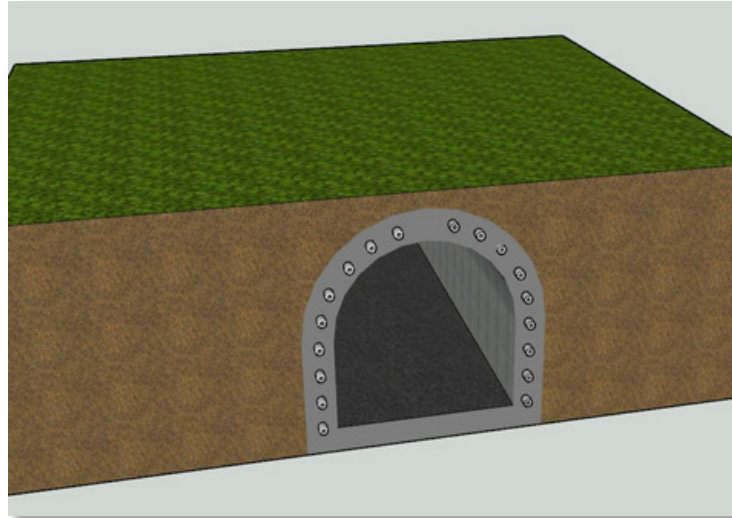




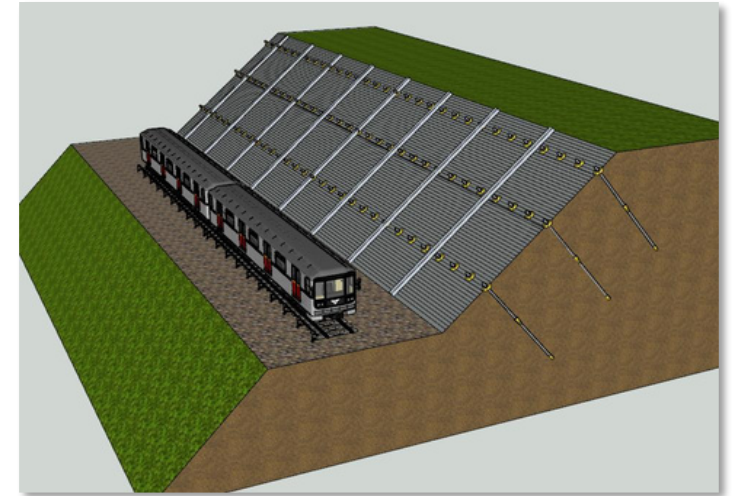
APPLICATION

The rockbolt system is mainly used for mine, tunnel, slope support, foundation support, etc. It can be used for temporary support in the early stage of the project, and can effectively enhance the stability of soil and rock mass.

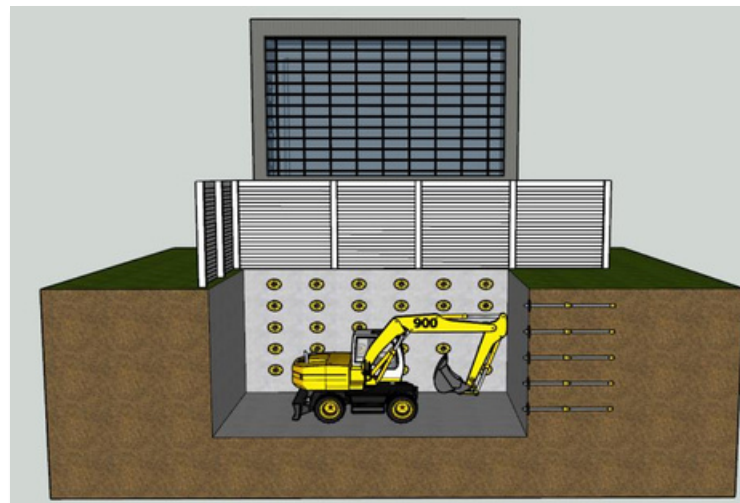
TUNNEL SUPPORT



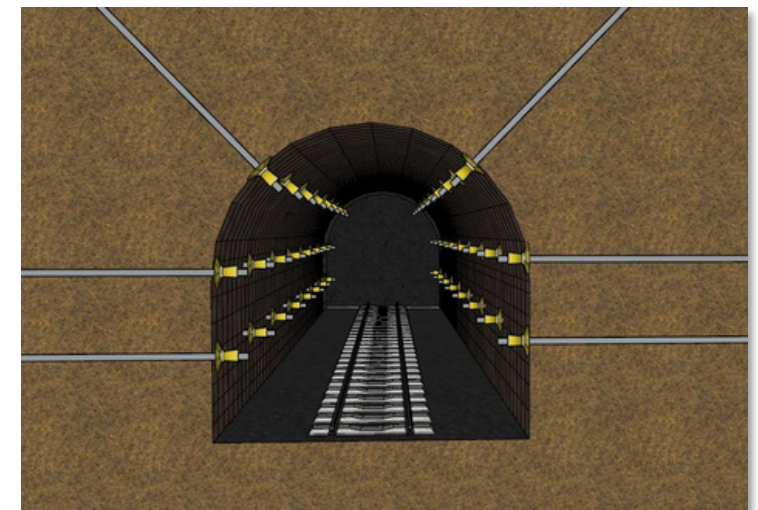
SLOPE SUPPORT



FOUNDATION SUPPORT



MINE SUPPORT



PROJECTS



Stockholm, Sweden FormTies



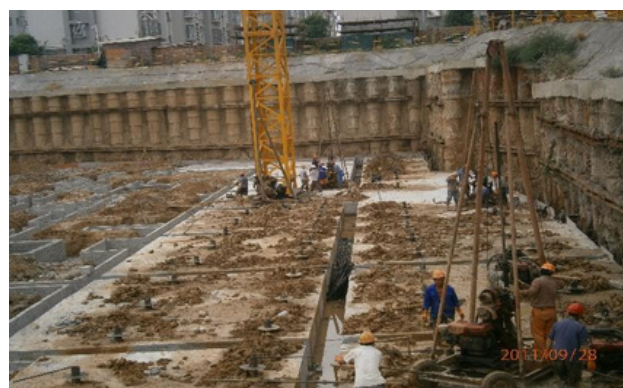
Shendong Coal Mine Support



Jurong Island Tunnel in Singapore



Guizhou province Dao 'an
expressway tunnel

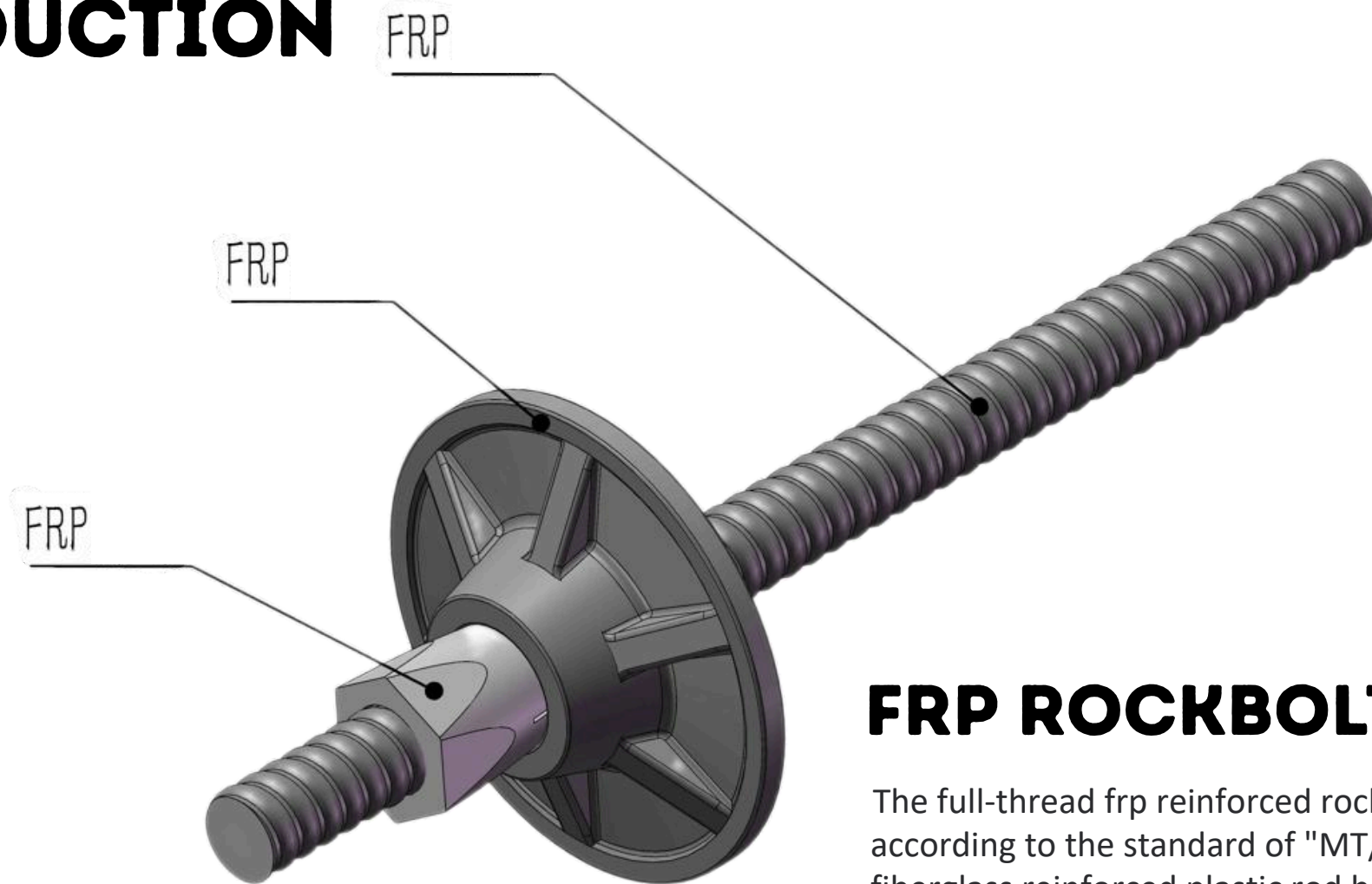


Army Command College
anti-floating anchor



Nanjing Zijin investment
side slope support

PRODUCTS INTRODUCTION



FRP ROCKBOLT FOR MINE

The full-thread frp reinforced rockbolt used in mine is produced according to the standard of "MT/T 1061-2008 resin rockbolt fiberglass reinforced plastic rod body and accessories", which is mainly used for coal mine roadway support.



GENERAL FRP ROCKBOLT FOR MINES

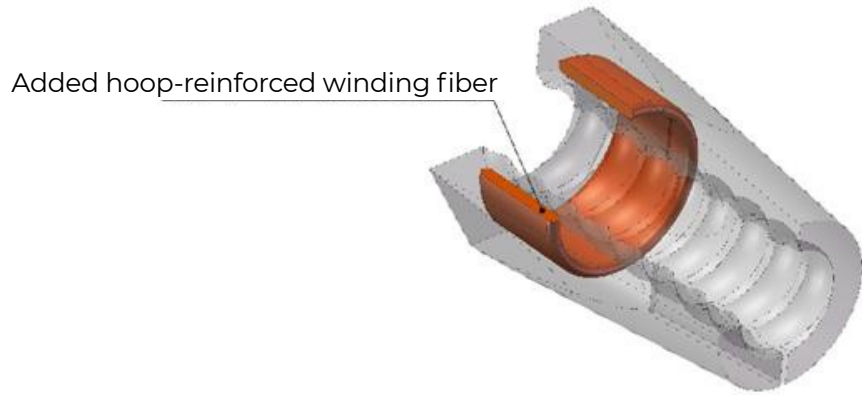
ADVANTAGES

- **HIGH STRENGTH, LARGE ANCHORING FORCE**
- **LIGHT WEIGHT, EASY TO TRANSPORT**
- **EXCELENT CUTTABLILITY, NO NEED TO DEMOLISH, TO ENSURE THE EFFICIENCY OF MINING**
- **ANTIFLAMING**
- **ANTI-STATIC, CUTTING WITHOUT SPARK, TO ENSURE THE SAFETY OF MINE PRODUCTION**

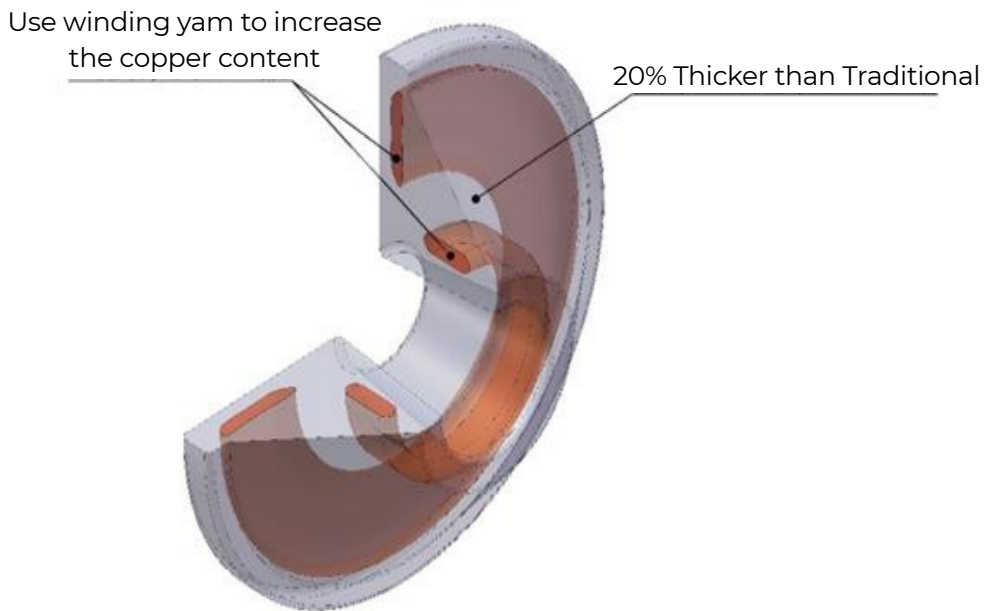


Performance Parameters and Calibration Certificate

Type No.	Diameter (mm)	Tensile Strength (MPa)	Breaking load thread (kN)	Plate load Capacity (kN)	Anchorage Force (kN)	Torsion (Nm)	Weight (g/m)	Ultimate shear strength (MPa)	Antistatic value (Ω)
MGSL18	18	≥300	60	60	60	≥40	460	≥75	≤3X10 ⁸
MGSL20	20		70	70	70		570		
MGSL22	22		80	80	80		690		
MGSL24	24		90	90	90		850		
MGSL27	27		110	110	110		1070		
MGSL32	32		150	150	150		1500		



Cone nut



HIGH STRENGTH FRP ROCKBOLT FOR MINE

With the improvement of coal mine support requirements, the technical requirements for FRP rockbolt gradually improve, Jiangsu Fiber has FRP composite materials engineering technology research center, through cooperation with universities and design institutes, designed the internal material structure of high-strength FRP rockbolt, the optimal ratio of fiber resin, fiber radial reinforcement, interface optimization bonding. The structural bearing capacity of the plate & nut is reinforced by the fabric to meet the customer's demand for high-end FRP rockbolts.

PERFORMANCE PARAMETERS

Type No.	Diameter (mm)	Tensile Strength (MPa)	Breaking load thread (kN)	Plate Load Capacity (kN)	Anchorage force (kN)	Torsion (Nm)	Weight (g/m)	Ultimate shear strength (MPa)	Antistatic value (Ω)
MGSL18	18	≥500	≥80	≥80	80	≥40	460	≥120	≤3X10 ⁸
MGSL20	20		≥90	≥90	90		570		
MGSL22	22		≥100	≥100	100		690		
MGSL24	24		≥130	≥130	130		850		
MGSL27	27		≥180	≥180	180		1070		
MGSL32	32		≥200	≥200	200		1500		



GENERAL SOLID FRP ROCKBOLT

Common solid fiberglass rockbolt is the foundation support material, which is widely used in tunnel support, slope support and foundation support.



PERFORMANCE PARAMETERS

Type No.	Diameter (mm)	Ultimate tensile load(KN)			Cross section (mm ²)	Ultimate tensile strength (MPa)			Modulus Of elasticity (GPa)			Torsion (Nm)			Weight (g/m)			Ultimate shear strength (MPa)
		UPR	VE	EP		UPR	VE	EP	UPR	VE	EP	UPR	VE	EP	UPR	VE	EP	
1	16	125	130	149	165	750	800	900	≥40	≥40	≥45	35	40	40	350	360	365	≥150
2	18	150	165	193	214	700	770	900				45	50	50	460	470	480	
3	20	200	210	242	269	700	770	900				60	70	70	560	570	590	
4	22	250	255	297	330	700	770	900				80	90	100	690	700	710	
5	24	280	305	358	398	700	770	900				100	110	130	860	870	890	
6	25	320	335	391	434	700	770	900				120	130	150	930	950	950	
7	27	380	385	434	511	700	750	850				130	150	180	1050	1070	1100	
8	28	400	410	469	552	700	750	850				130	160	200	1200	1220	1250	
9	30	470	480	542	638	700	750	850				180	200	220	1350	1380	1410	
10	32	550	550	585	731	700	750	800				230	250	250	1550	1560	1620	
11	38	750	735	785	1046	700	700	750				/	/	/	2250	2300	2350	
12	40	790	815	873	1164	650	700	750				/	/	/	2480	2540	2600	

Type No.

- ➔ F60 – UPR
- ➔ F80 –EP
- ➔ F90 –VE

PERFORMANCE PARAMETERS

Compared with steel rockbolt, low torque is the main reason limiting the wide application of FRP rockbolt. By improving the bolt structure and optimizing the material design, the company has developed high torque FRP rockbolt, overcoming the shortcomings of low torque of traditional one, and can apply prestress through torque to improve the stability of supporting structure.

Type No	Diameter (mm)	Ultimate tensile load (KN)	Breaking load thread (kN)		Cross section (mm ²)	Ultimate tensile strength (MPa)	Modulus Of elasticity (GPa)	Torsion (Nm)	Weight (g/m)	Ultimate shear strength (MPa)
			(Steel)	(FRP)						
F60-22	22	210	100	60	330	≥40	300	700	150	
F60-25	25	260	180	70	434		400	950	130	
F60-32	32	440	250	90	731		500	1600	110	



GENERAL HOLLOW FRP ROCKBOLT

The hollow fiberglass reinforced rockbolt is mainly used for grouting rockbolt. Cement mortar or other materials are used as binder to bond the supporting body to the full length of the bolt, and the supporting effect is more excellent.

PERFORMANCE PARAMETERS

No.	OutDiameter/Hole Diameter (mm)		Ultimate tensile load(KN)		Cross section (mm ²)	Ultimate tensile strength (MPa)		Modulus of elasticity (GPa)		Ultimate shear strength (MPa)		Breakingload thread(kN)			Torsion (Nm)	Weight (g/m)	
	UPR	EP	UPR	EP		UPR	EP	UPR	EP	UPR	EP	(Steel)		(FRP)		UPR	EP
												UPR	EP				
1	25/12	25/12	210	250	321	650	780	≥40	≥45	≥150	≥150	140	150	70	70	630	660
2	28/12	28/12	320	345	439	700	780					160	170	70	80	900	930
3	32/15	32/15	350	410	554	630	750					250	280	90	150	1150	1200
4	60/40	/	716	/	1431	500		≥30		≥100		/	/	/	/	2700	/
5	76/60	/	766	/	1532	500						/	/	/	/	2900	/



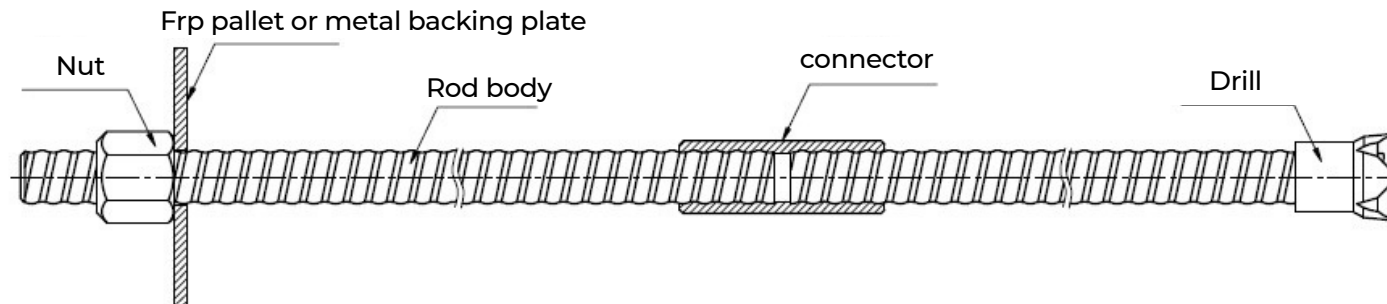
SELF-DRILLING HOLLOW ROCKBOLT

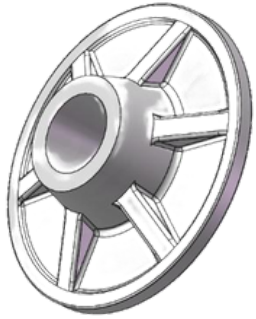
The hollow self-drilling rockbolt is mainly used to support soft soil layer which is difficult to pre-hole. In practical application, the body of the drill can be connected with the drill, and it can be directly drilled into the soil layer without pre-drilling. Multiple rod bodies are connected through special connectors, one by one, until the length of the design requirements are reached.

Performance Parameters



Type No.	Out Diameter/Hole Diameter (mm)	Ultimate tensile load (kN)	Cross section (mm ²)	Ultimate tensile strength (MPa)	Modulus of elasticity (GPa)	Ultimate shear strength (MPa)	Breaking load thread (kN)		Torsion (Nm)	Weight (g/m)
							(Steel Nut)	(Steel Coupling)		
H65-32/15	32/15	350	497	700	≥45	≥150	120	160	300	1000
H65-38/20	38/20	500	704	700			140	180	420	1350
H65-51/33	51/33	680	1054	700			180	200	700	1960

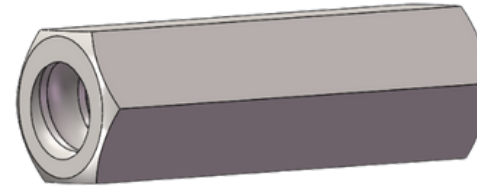




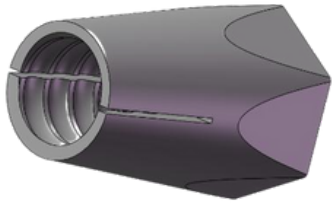
FRP Conical Plate



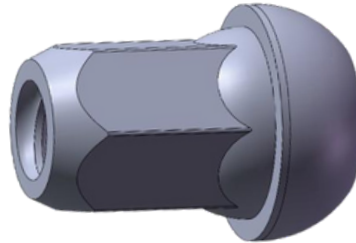
FRP Domed Plate



Steel Hexagonal Nut



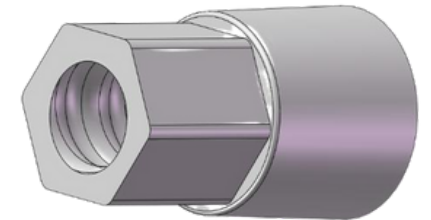
FRP Conical Nut
(Damp)



FRP Domed Nut
(Damp)



Steel Coupler


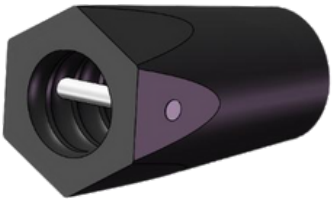


FRP Flat Nut

ACCESSORIES



Rockbolt accessories include FRP plates, steel nuts, steel plates, steel connectors and fasteners. We have the widest range of rockbolt accessories on the market.

PERFORMANCE PARAMETERS

Legend	Type No.	Diameter (mm)	Hex SW (mm)	Length(mm)	C-conical D-domed P-plane
 (General Conical Nut)  (Damping taper nut top through torque can be designed according to customer requirements)	NC-18C	18	36	70	C
	NC-20C	20	36	70	C
	NC-22C	22	36	70	C
	NC-24C	24	41	80	C
	NC-25C	25	41	80	C
	NC-27C	27	48	80 & 100	C
	NC-28C	28	48	80	C
	NC-32C	32	48	80 & 100	C



PERFORMANCE PARAMETERS

Legend	Type No.	Diameter (mm)	Hex SW (mm)	Length (mm)	Hex SW (mm)	Type (C-conical D-domed P-plane)
 (General Domed Nut)	ND-20	20	36	70	60	D
	ND-22	22	36	70	60	D
	ND-25	25	41	80	57	D
	ND-25L58	25	41	58	60	D
	ND-28L58	28	41	58	60	D
	ND-28	28	46	80	70	D
	ND-32	32	46	100	65	D
 (Damping taper nut top through torque can be designed according to customer requirements)	NP-22	22	36	75	/	P
	NP-25	22	36	75	/	P

PERFORMANCE PARAMETERS

Legend	Type No.	Diameter (mm)	Height (mm)	Type (C-conical D-domed)	Notes
	PC-140C	140	34	C	Ordinary type with 18-22mm nuts
	PC-170x	170	46	C	Ordinary type with 24mm nuts
	PC-170C	170	46	C	Ordinary type with 27-32mm nuts
	P-200C	250	46	C	Ordinary type with 27-32mm nuts
	PC-140H10	140	34	C	Enhanced type with 18-22mm nuts
	PC-170H15	170	46	C	Enhanced type with 27-32mm nuts
	PD-170D20	170	20	D	With Domed Nut
	PD-170D	170	34	D	With Domed Nut
	PD-200D	200	33	D	With Domed Nut

PERFORMANCE PARAMETERS

Legend	Type No.	Diameter (mm)	Hex SW (mm)	Length(mm)	Ultimate Load (KN)
	NS-22C100	22	32	100	120
	NS-25C100	25	36	100	150
	NS-25C150	25	36	150	180
	NS-28C100	28	38	100	170
	NS-28C150	28	38	150	200
	NS-32C150	32	46	150	280
	NS-40C150	40	60	150	350

PERFORMANCE PARAMETERS

Legend	Type No.	Diameter (mm)	Outer Diameter (mm)	Length (mm)	Ultimate Load (KN)
	CS-22C150	22	30	150	90
	CS-25C200	25	38	200	150
	CS-25C300	25	38	300	180
	CS-28C200	28	38	200	180
	CS-28C300	28	38	300	200
	CS-32C200	32	45	200	240
	CS-32C300	32	45	300	280
	CS-40C300	40	60	300	350

PERFORMANCE PARAMETERS

Legend	Type No.	Diameter (mm)	OD (mm)	Material and Type
	DB-25/42	25	42	All steel cross
	DB-25/42H	25	42	All steel cross
	DB-32/51	32	51	All steel cross
	DB-32/51H	32	51	All steel cross



GFRP Tie Bar

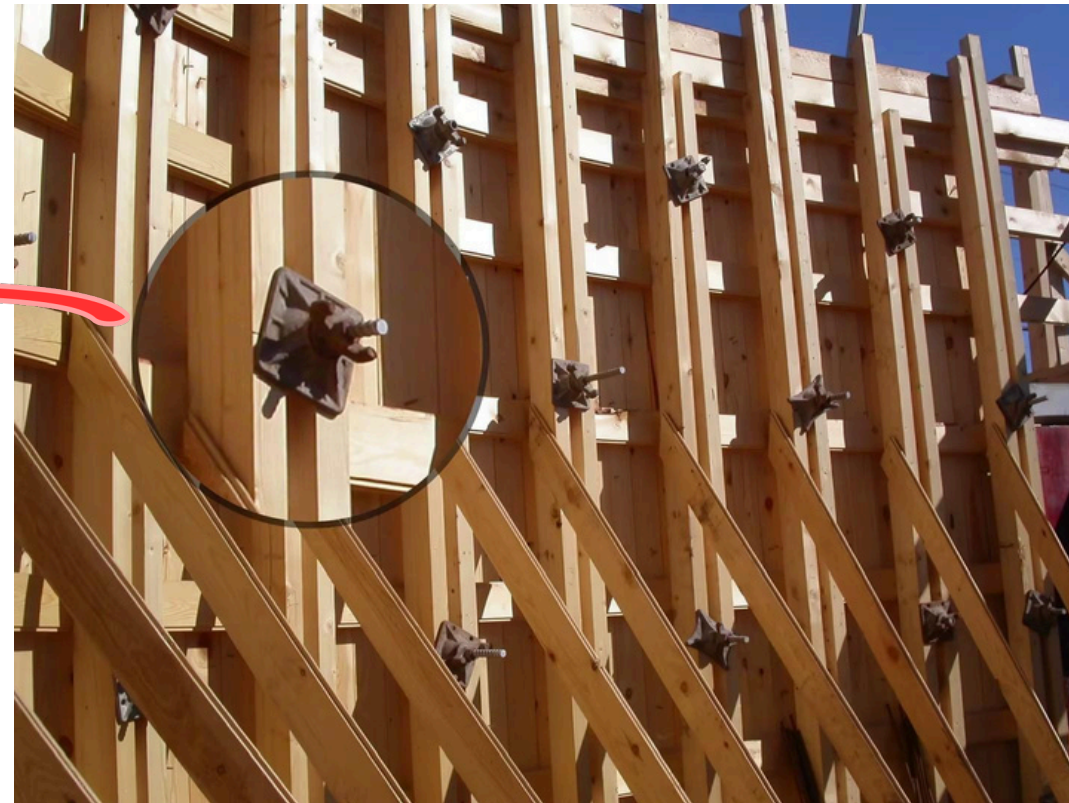
It is widely used in formwork fastening of concrete structure

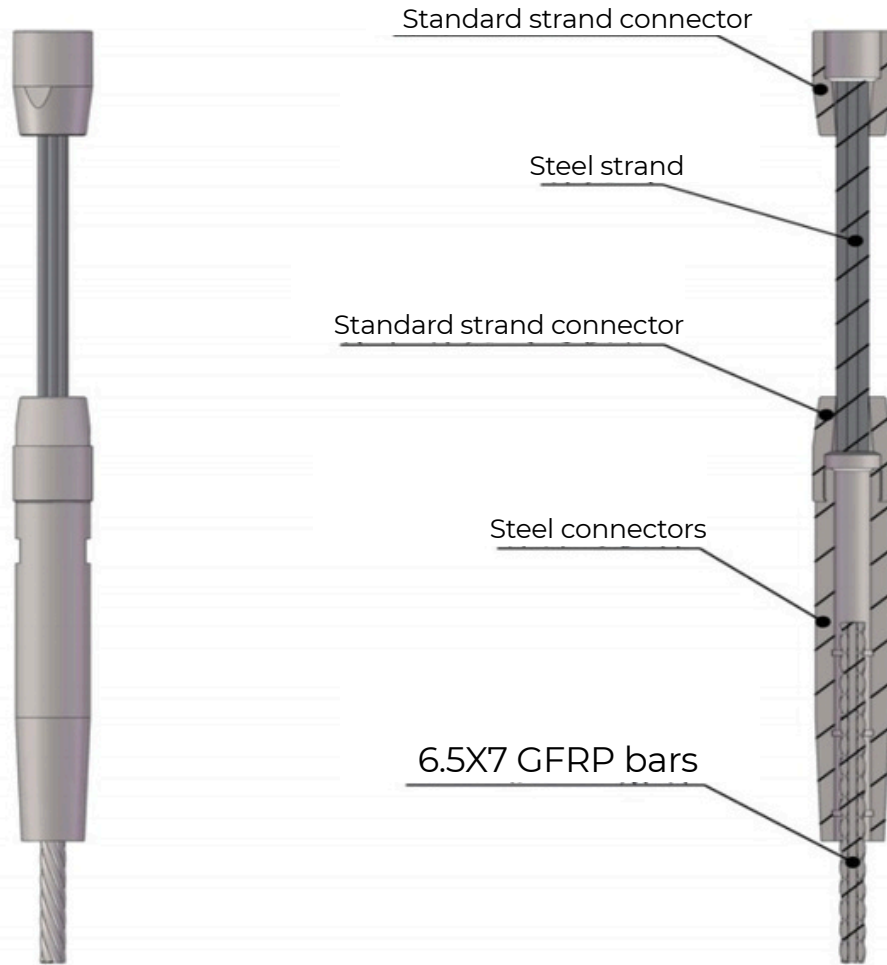
ADVANTAGES

- ➔ Easy to cut and install
- ➔ No rust, no water penetration, no magnetism
- ➔ Light weight, high strength
- ➔ Arbitrary length
- ➔ Fasteners can be reused

PERFORMANCE PARAMETERS

Type No.	Diameter(mm)	Ultimate Tensile Load (KN)	Breaking load thread (Steel) (kN)	Ultimate tensile strength (MPa)	Torsion(Nm)	Modulus of Elasticity (Gpa)	Ultimate Shear Strength (Mpa)
F62-17	17	150	60	800	50	≥45	≥120
F62-22	22	250	120	750	100		
F62-25	25	300	150	750	150		





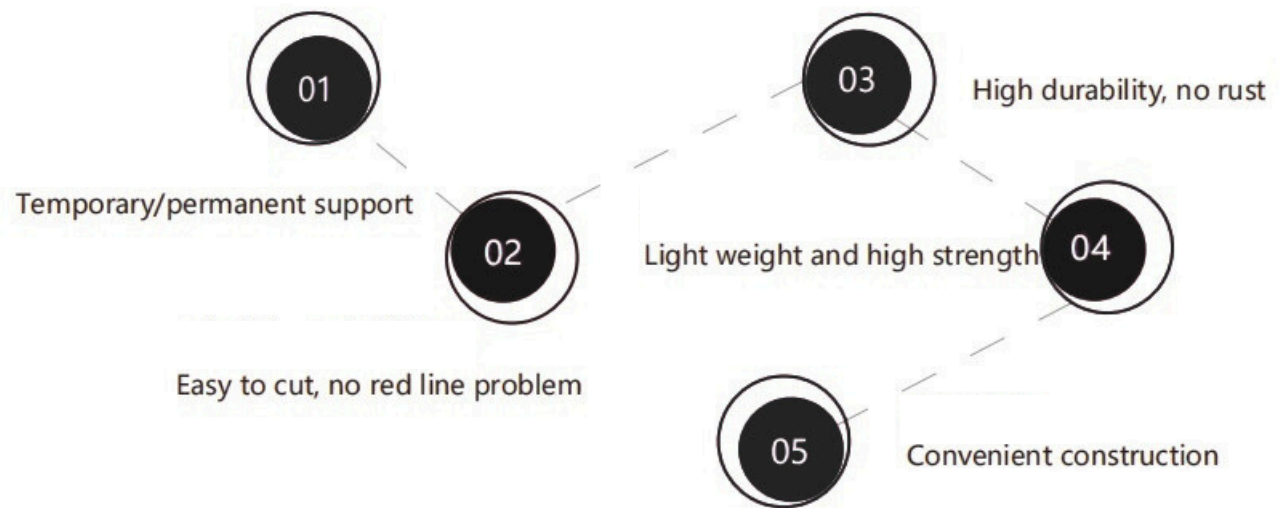
FRP CABLE BOLTS

Jiangsu Fiber FRP cable bolt is a new type of unlimited length composite cable bolt product, which can be widely used in tunnels, mines, confined spaces, slope support and other projects.

PERFORMANCE PARAMETERS

Type No.	Diameter (mm)	Ultimate tensile strength (MPa)	Modulus of elasticity (GPa)	Ultimate strain (%)	Ultimate load (kN)
Cable 80-6.5x5	6.5x5	1100	50	2	120
Cable 80-6.5x7	6.5x7	1100	50	2	180
Cable 80-6.5x10	6.5x10	1100	50	2	250

ADVANTAGES:



APPLICATION



FRP cable bolt combination installation is convenient, according to the engineering needs, can be installed in the factory combination, can also be installed in the site nearby combination, do not need professional tools and equipment

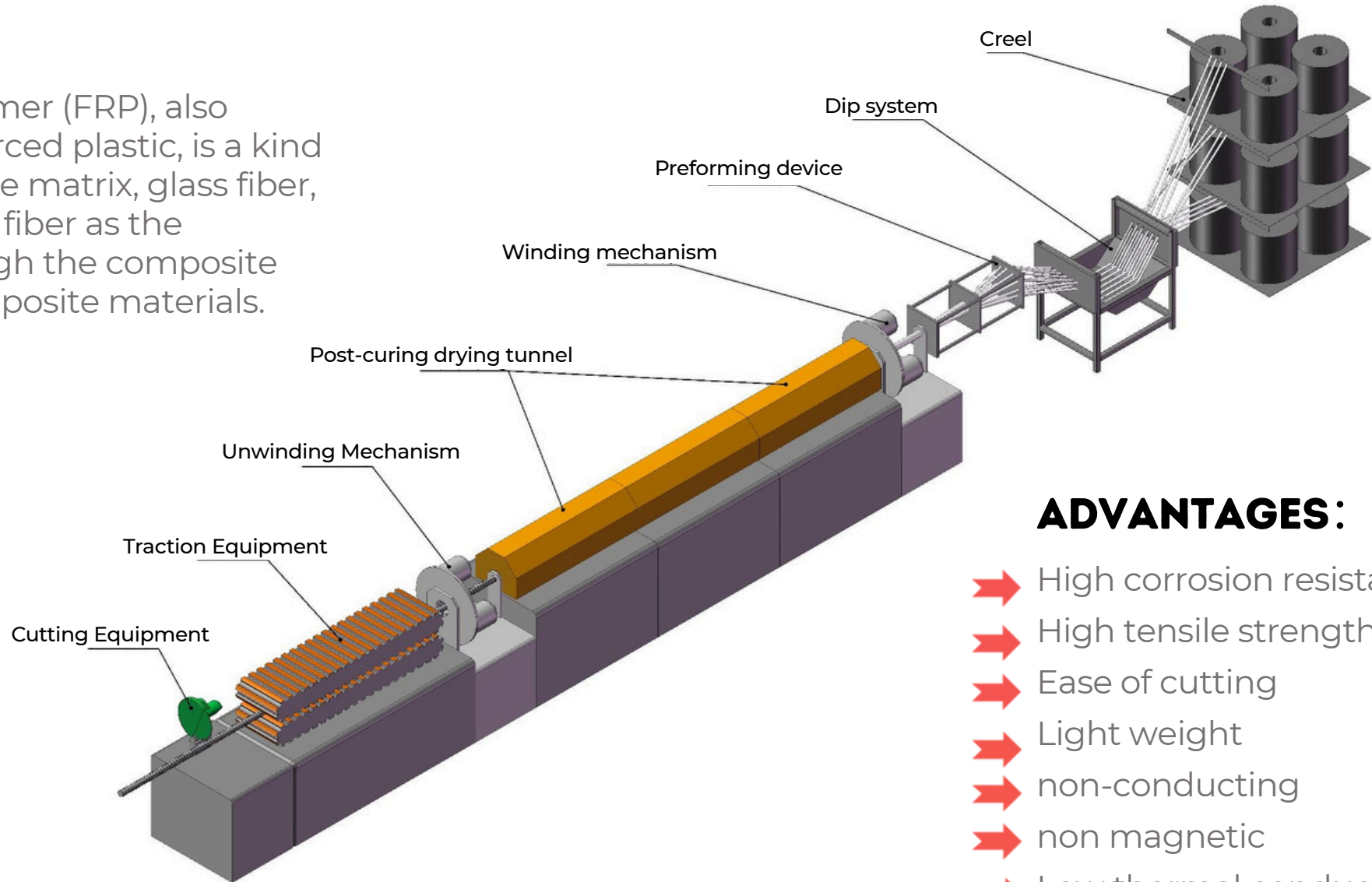




REBAR SERIES



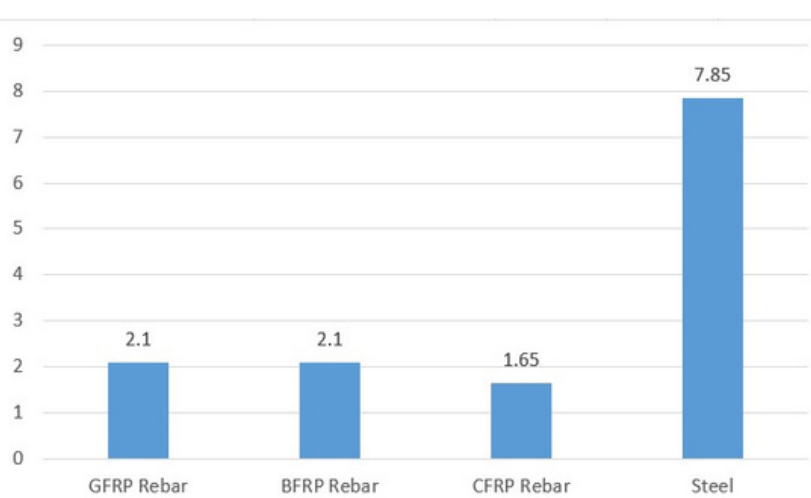
Fiber reinforced polymer (FRP), also known as fiber reinforced plastic, is a kind of polymer resin as the matrix, glass fiber, basalt fiber or carbon fiber as the reinforcement, through the composite process made of composite materials.



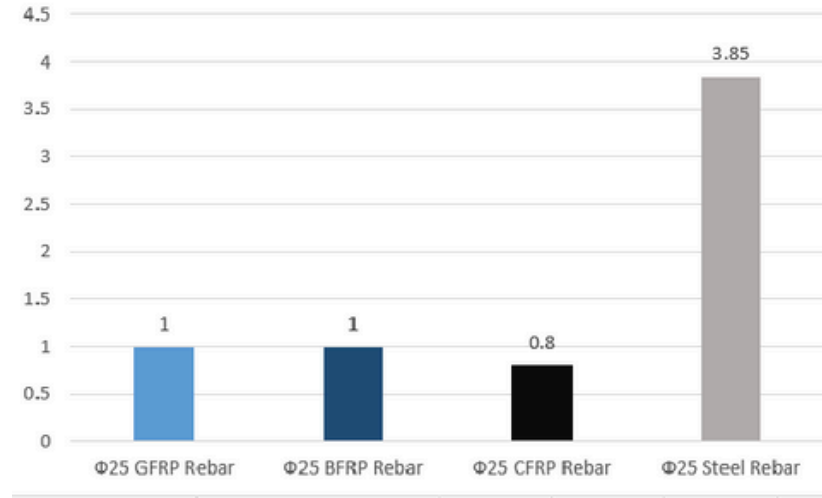
ADVANTAGES:

- ➔ High corrosion resistance
- ➔ High tensile strength
- ➔ Ease of cutting
- ➔ Light weight
- ➔ non-conducting
- ➔ non magnetic
- ➔ Low thermal conductivity

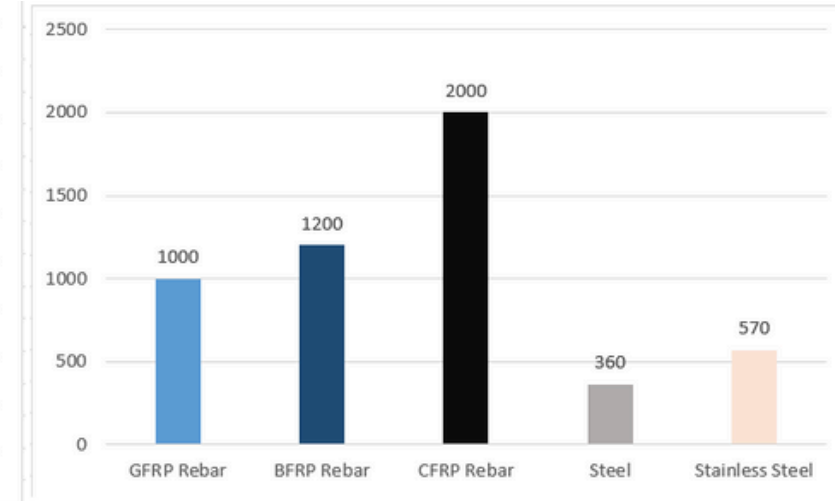
COMPARED WITH THE STEEL BARS



**DENSITY
(G/CM³)**



**WEIGHT
(KG/M)**



**TENSILE
STRENGTH
(MPA)**

PROJECT CASES



Jiangsu Provincial Food and Drug Administration Foundation Pit Project



Cross-river tunnel underground continuous wall project



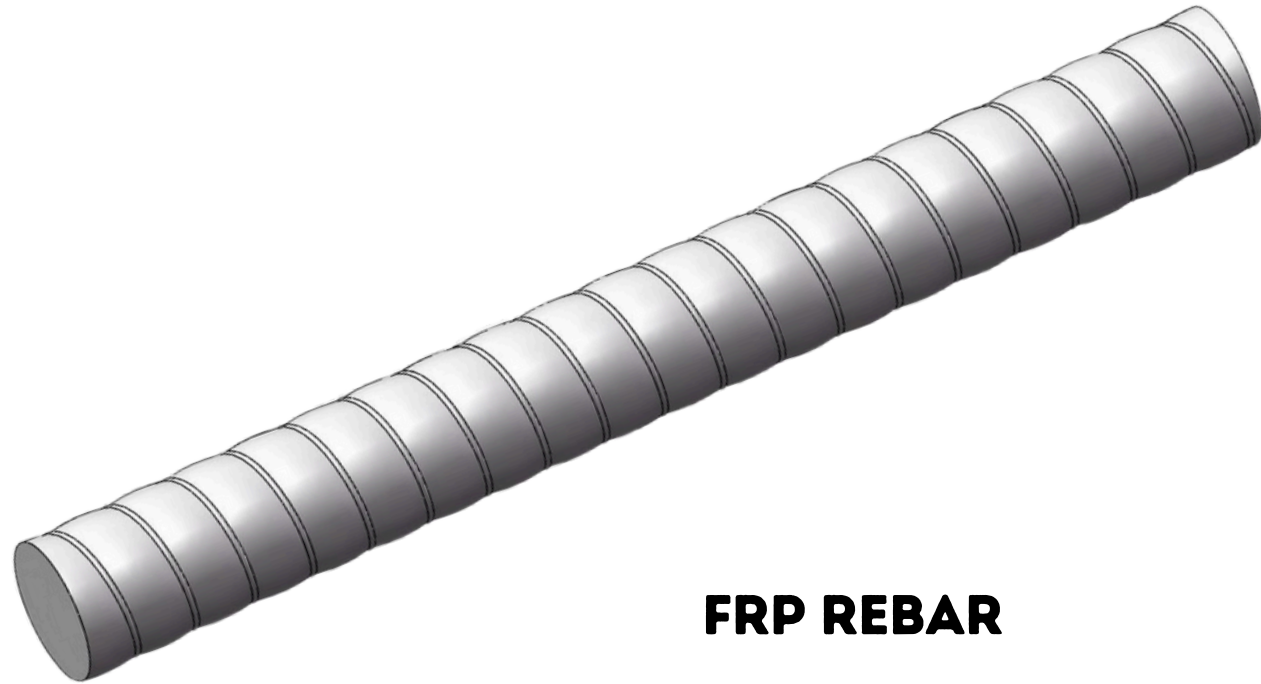
The Streetcar Project



Shanghai Yangshan Port Automation Wharf Project



Subway Connecting Wall Project



FRP REBAR

With fiberglass reinforcement material, FRP Rebar is the most important composite reinforcement material on the market at present, with light weight, high strength, corrosion resistance, easy to cut and non-magnetic characteristics, widely used in road bridge pavement, foundation pit construction, coastal engineering, tunnel construction, TBM construction method, CT room and so on.

CLASSIFICATION

According to the surface shape of the FRP rebar, it is divided into full thread surface and sand-coated (sandblasted) surface, which can be selected according to customer requirements.

Standard No.	Standard Name
<i>GB/T 26743-2011</i>	<i>Fiber reinforced composite bars for structural engineering</i>
<i>ACI 440.6M-08</i>	<i>Glass fiber reinforcement for civil engineering</i>
<i>ACI 440.6M-08</i>	<i>Specification for Carbon and Glass Fiber-Reinforced Polymer Bar Materials for Concrete Reinforcement</i>
<i>CSA S807</i>	<i>Specification for fibre-reinforced polymers</i>





PERFORMANCE PARAMETERS

No.	Diameter (mm)	Ultimate tensile load(KN)		Cross section (mm ²)		Ultimate tensile strength (MPa)		Modulus of Elasticity (GPa)	Ultimate shear strength (MPa)		Weight (g/m)
		UPR (Normal)	UPR (High performance)	UPR (Normal)	UPR (High performance)	UPR (Normal)	UPR (High performance)		UPR (Normal)	UPR (High performance)	
1	8	30	54	50.3	50	600	1080	≥40	≥110	≥150	105
2	10	47	67	78.5	73		923				165
3	12	68	93	113	103		903				240
4	14	80	118	133	134		880				280
5	16	97	152	177	180	550	842				370
6	18	125	207	227	248		833				46
7	20	156	220	284	278		792				560
8	22	190	277	346	355		780				700
9	25	226	342	452	452	500	757				950
10	28	287	417	573	590		707				1220
11	30	331	457	661	671		681				1350
12	32	378	497	755	740		672				1550
13	36	433	585	962	961	450	609				2040
14	40	538	640	1195	1190		538				2540

Type No.

➔ B70 –UPR Normal Resin

➔ B71–UPR High Performance Resin (UPR)

PERFORMANCE PARAMETERS

No.	Diameter (mm)	Ultimate tensile load (KN)		Cross section (mm ²)		Ultimate tensile strength (MPa)		Modulus of elasticity (GPa)		Ultimate shear strength (MPa)		Weight (g/m)	
		EP	VE	EP	VE	EP	VE	EP	VE	EP	VE	EP	VE
1	6	28	28	28	28	1000	1000	≥50	≥40	≥150	60	60	
2	8	50	50	50.3	50	1000	1000				105	105	
3	10	79	69	78.5	73	1000	950				165	165	
4	12	113	98	113	103	1000	950				240	240	
5	14	120	121	133	134	900	900				280	280	
6	16	159	162	177	180	900	900				370	370	
7	18	204	211	227	248	900	850				460	460	
8	20	256	236	284	278	900	850				560	560	
9	22	311	284	346	355	900	800				700	700	
10	25	407	362	452	452	900	800				950	950	
11	28	458	443	573	590	800	750				1220	1220	
12	30	529	518	661	690	800	750				1350	1350	
13	32	604	518	755	740	800	700				1550	1550	
14	36	770	673	962	961	800	700				2040	2040	
15	40	956	774	1195	1190	800	650				2540	2540	

Type No.

- ➔ B80 –Epoxy Resin
- ➔ B90 –Vinyl Ester Resin



CFRP REBAR

FRP Rebar reinforced by carbon fiber. Using the characteristics of high strength and high modulus of carbon fiber, the obtained reinforcement has the characteristics of high specific strength and specific modulus and excellent mechanical properties, and is widely used in prestressed structures, such as prestressed beams, shock-proof houses, bridge cables, etc.



PERFORMANCE PARAMETERS

Type No.	Diameter (mm)	Nominal Area (mm ²)	Ultimate Tensile Load(KN)	Guaranteed tensile strength (MPa)	Modulus of Elasticity (GPa)	Weight (g/m)
B200-6	6	28	56	2000	130	50
B200-8	8	50	100	2000	130	76
B200-10	10	78	156	2000	130	120
B200-13	12	113	226	2000	130	175
B200-16	16	188	338	1800	130	300



BFRP REBAR

FRP rebar with basalt fiber as reinforcement material. Raw material selection of natural basalt made of green fiber, is an environmentally friendly product, its strength and modulus is better than ordinary glass fiber.

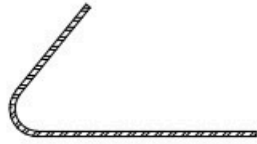


PERFORMANCE PARAMETERS

Type No.	Diameter (mm)	Ultimate tensile load(KN)	Cross section (mm ²)	Ultimate tensile strength (MPa)	Modulus of elasticity (GPa)	Ultimate shear strength (MPa)	Weight (g/m)
B150-6	6	28	28.3	1000	≥45	≥150	60
B150-8	8	50	50.3				110
B150-10	10	79	78.5				170
B150-12	12	113	113				245
B150-14	14	120	133	900			285
B150-16	16	159	177				380
B150-18	18	182	227	800			470
B150-20	20	227	284				570
B150-22	22	277	346				710
B150-25	25	362	452				970



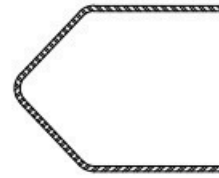
01



02



03



04



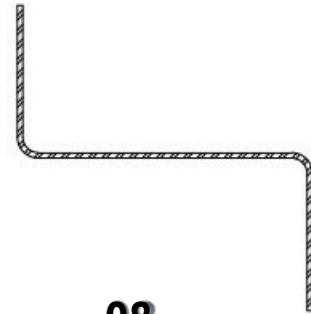
05



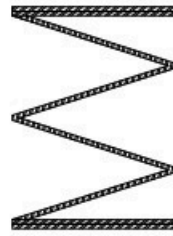
06



07



08



09



10



11



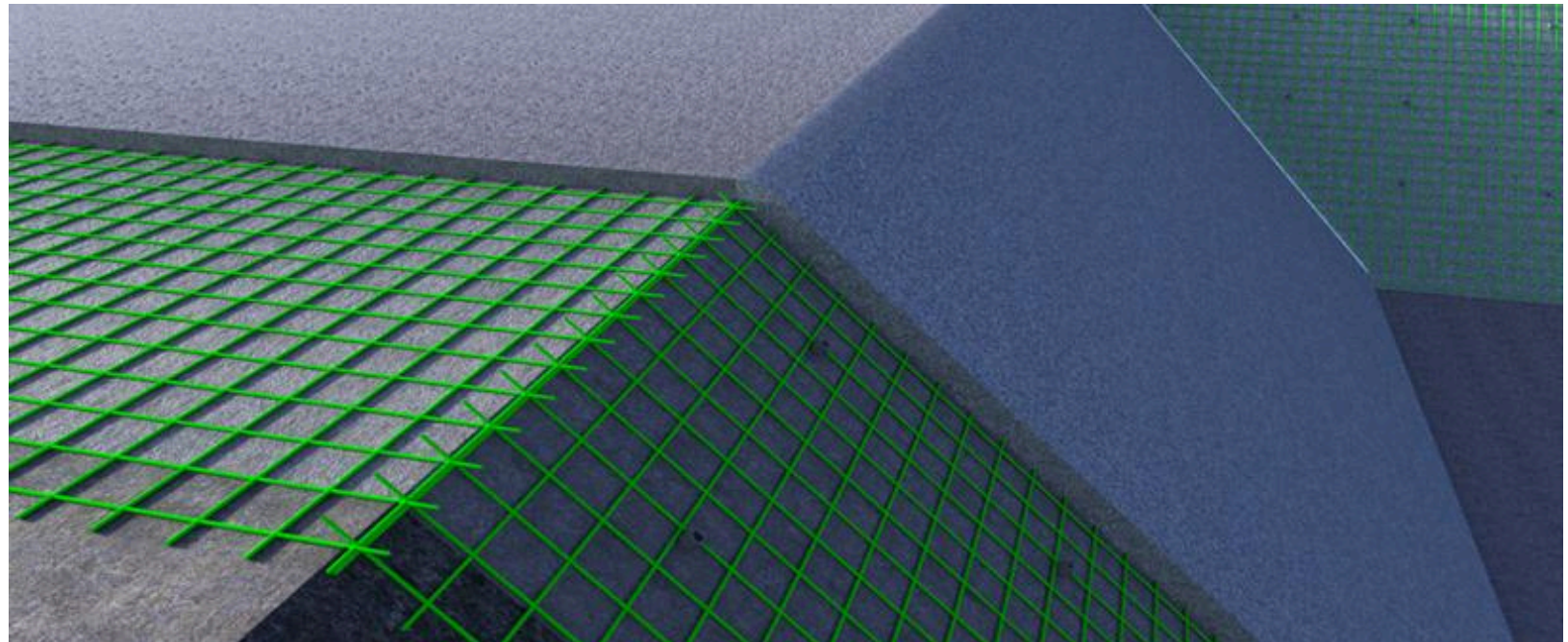
12

FRP SPECIAL-SHAPED REBAR

FRP special-shaped rebars mainly include arc, L-shaped, V-shaped, rectangular stirrup, polygonal stirrup, circular stirrup and continuous spiral stirrup, which are mainly used for binding of steel cage. The new process of continuous winding closed stirrup optimizes the corner performance of stirrup, improves the retention rate of bending section of stirrup strength, and has high production efficiency, so customers can customize different shapes of closed stirrup.

FRP Mesh

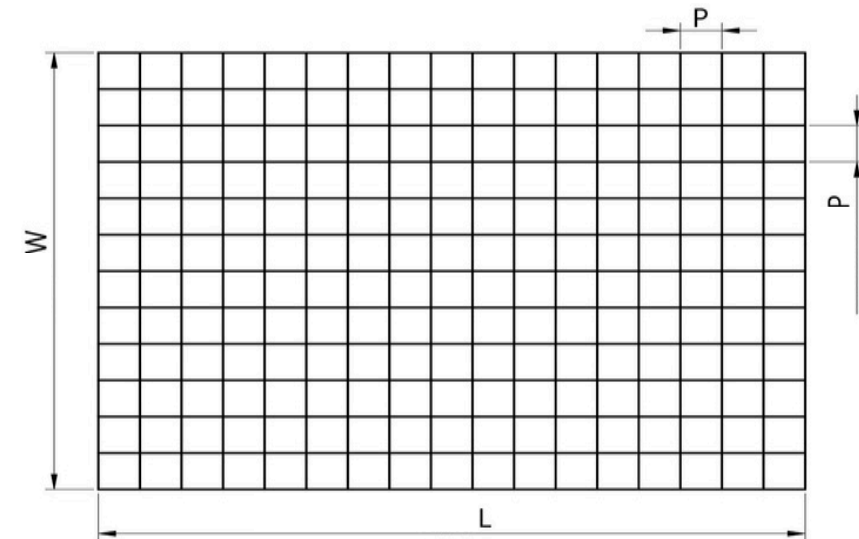
FRP mesh is a new type of composite material products, good mechanical properties, high node stability bearing capacity, with similar bearing capacity characteristics of steel mesh, can be widely used in tunnel protective mesh, mine protective mesh, civil engineering concrete reinforced structure, slope support and other projects.



Performance Parameters & Specification Sheet

Type No.	Diameter (mm)	Ultimate tensile strength (MPa)	Modulus of elasticity (GPa)	Resin	Permanent/Temporary
Mesh	4, 6, 8	800	40	UPR	Temporary
		900	45	VE	Permanent
		900	45	PU	Permanent

Specification Sheet		
Diameter (mm)	Mesh Spacing (mm)	Width (mm)
3	33*33/50*50/66*66	<2200
4	33*33/50*50/66*66/100*100	<2200
6	50*50/100*100	<2200
8	50*50/100*100	<2200





ADVANTAGES & APPLICATIONS



APPLICATION:

- Precast concrete components
- Concrete surface reinforcement
- Concrete repair
- Shotcrete reinforcement
- Reinforcement of slope protection net
- Coal mine tunnel protection net reinforcement
- Airport transparent structure
- Other temporary applications

ADVANTAGES:

- Light weight and high strength
- High durability, no rust
- Non-magnetic
- Easy to cut, cutting without sparks
- Insulation
- Convenient construction
- Customizable



SECOND GENERATION FRP REBAR

It is a new high performance product developed by Jiangsu Fiber, with the characteristics of high strength, non-magnetic, high durability, corrosion resistance and easy cutting. JS Fiber innovative development of new production process, the use of new vinyl resin and ECR glass fiber production, the overall structure is more dense, compared with the first generation of product appearance, size, mechanical properties improved significantly, the comprehensive performance has reached the advanced level of foreign countries.

PERFORMANCE PARAMETERS

Type No.	Diameter (mm)	Ultimate tensile load(KN)	Cross section (mm ²)	Ultimate tensile strength (MPa)	Modulus of elasticity (GPa)	Ultimate shear strength (MPa)	Weight (g/m)
B88-20	20	30	314	1000	≥60	≥160	780
B88-25	25	47	491	1000			1200
B88-32	32	68	804	1000			1950



QUALITY MANAGEMENT

Afritech Composites has always adhered to quality as the company's first responsibility, we have established and formed a complete set of quality management system, from raw

materials to factory quality traceability, with a scientific and responsible attitude to create product quality to satisfy customers.

Raw Material Control

Establish a raw material library management process system, comprehensively evaluate the production capacity and quality control ability of raw material manufacturers, select high-quality raw material suppliers for long-term cooperation, and strictly accept incoming products.



Production Process Control



Production site execution, open machine inspection, self-inspection, random inspection, inspection in the production process of comprehensive control of product quality and timely upload the latest data by ERP system

Leave Factory Control

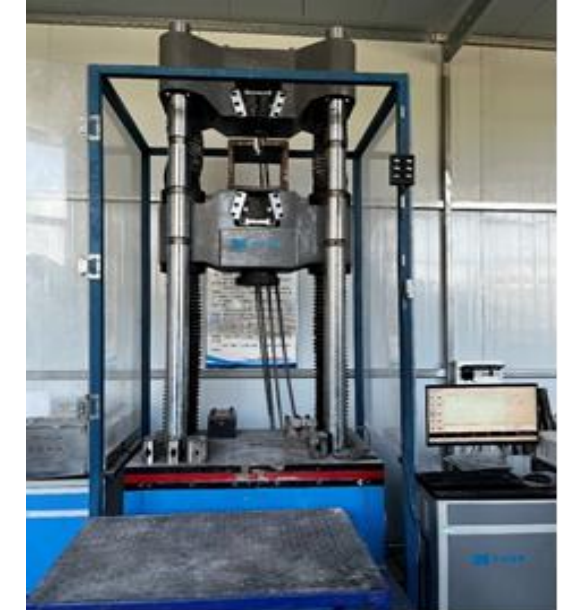
Before the product leaves the factory, the inspection personnel will inspect the product size, packaging and label according to the sampling proportion, and issue the performance inspection report and qualification certificate of each batch.



Our Partner has established a standardized laboratory, equipped with a full set of testing equipment, with a full set of anchor rod testing capabilities and test means. The existing 1000KN electro-hydraulic servo universal testing machine, automatic surface tensiometer, flame retardant test equipment, torque test machine, digital display box type electric furnace and other experimental equipment and experimental production line for 2 days

► Laboratory column

EXPERIMENTAL EQUIPMENTS





SERVICE SYSTEM

Our team has been to research and development, production, sales of professional integrated services, according to the different needs of customers to provide complete and effective product solutions, while providing high-quality production and technical follow-up services, timely solve the problems encountered by customers.

R&D ABILITY

We has more than 30 invention and utility model patents, established the "Yancheng FRP Composite Engineering Technology Research Center" and enterprise technology center, and with Tsinghua University, Tongji University, Hohai University, Southeast University, Nanjing Forestry University and other universities and research institutions to establish a long-term good industry-university-research cooperation, with Hohai University to build a graduate workstation in Jiangsu Province,

Professional service process



CONTACT US

Johan Kriel

E: johan.kriel@drs-cd.com

M: +27 72 178 5406

Whatsapp: +27 72 178 5406

Suite 302, Zambia National Building
Society, President Avenue, Ndola,
Zambia

